

Beechcraft

King Air C90



1974 Beechcraft King Air C90 N308RM

Luxury and comfort in an affordable aircraft that is economical to own and operate. .

Airframe & Engines

The King Air C90 offers more flexibility, comfort and efficiency than any turboprop in its class. .

The airframe of King Air C90 LJ-628 reflects the care and attention to detail that is revealed by the maintenance records and history. Our inspection revealed no indication of any type of damage history or neglect.

Total Airframe Hours 11328

Total Airframe Cycles 8891

The engines of King Air C90 LJ-628 have been upgraded to Walter GE M601E-11A turbine engines, more durable than the original Pratt & Whitney engines with a lower operating and overhaul cost.

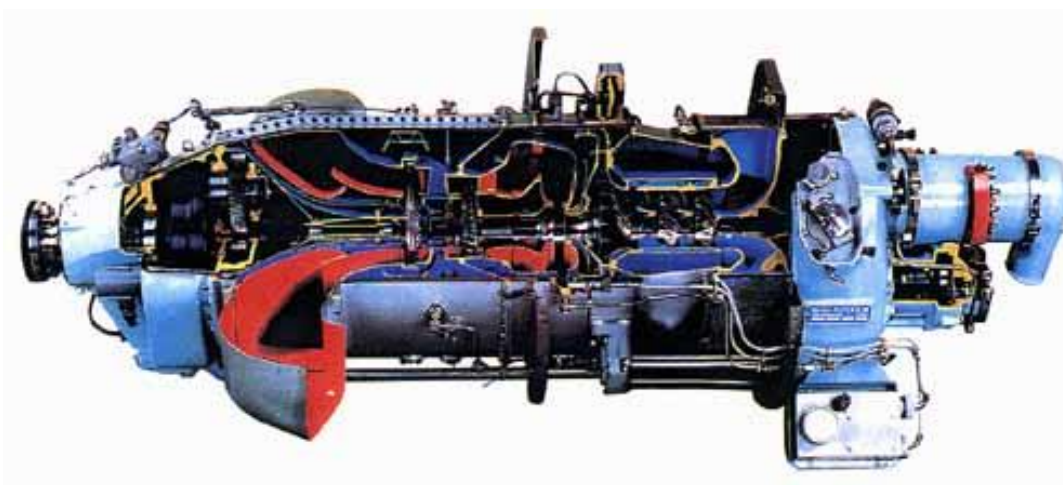
Left Engine Serial Number 862011Ovh 11/09

Total Hours since Overhaul 410

Right Engine Serial Number 883046 Ovh 11/09

Total Hours since Overhaul 410

The Walter GE engines do not have costly hot section inspections or fuel injectors to replace, but the savings doesn't stop there, without the hot section requirement you'll be able to go 2000 hours before the overhaul is required spending more on the overhaul than an average hot section inspection on the Pratt but far less than half the cost of a Pratt overhaul!



Walter GE M601E-11A



AVIA Propellers

A work of art that is stunning and makes a statement wherever you go.

King Air C90 N308RM is equipped with five blade Avia V150 props. These props increase the aircraft's rate of climb and reduce cabin noise. Not to mention that they are just plain sexy!

Left Prop Serial Number 940681276

Total Hours since Overhaul 410

Overhaul Date 3/09

Right Prop Serial Number 940681277

Total Hours since Overhaul 410

Overhaul Date 3/09



1974 Beechcraft King Air C90 N308RM

Luxury and comfort in an affordable aircraft that is economical to own and operate. .

Garmin Avionics

A panel to die for... that gives you the situational awareness to make sure "to die for" remains a euphemism.

The panel of King Air N308RM has been completely reworked with new panel inserts and a complete compliment of Garmin GPS/NAV/COMM's and a Garmin MFD.



Garmin GNS530W GPS/NAV/COMM

Garmin GNS430 GPS/NAV/COMM

Garmin GMX200 Multi-function Display

Garmin GTX330 Mode S Transponder

Garmin GMA340 Audio Panel



Avionics

The Garmin Multi-function Display shows real time weather from both the Garmin radar and Garmin XM Satellite Weather plus it displays traffic and terrain information as well! If safety is a concern, you won't feel any safer sitting at home!

- Garmin GWX68 Color Radar
- Garmin GDL69 XM Satellite Weather
- Garmin Terrain (GNS530 TAWS)
- Garmin Traffic (GTX330 Transponder)
- BF Goodrich WX-500 Stormscope
- King KI226 RMI
- King KN63 DME
- Collins PN101 HSI
- Collins ALT50 Radar Altimeter



All specifications are subject to change, purchaser is responsible for verification of specifications, RidgeAire does not warrant or guarantee that the above information is correct or accurate.

Interior

The King Air C90 offers a flexible and comprehensively equipped cabin, with a more spacious interior than any turboprop in its class. .



1974 Beechcraft King Air C90 N308RM

Luxury and comfort in an affordable aircraft that is economical to own and operate. .

The interior of N308RM was completely refurbished in 2008 and still looks like new. The designer chose a palette of pleasing colors that are pleasing to the eye and represent the quality and appeal that clients expect from a Beechcraft aircraft.

Seating

The interior of this beautiful King Air has a four place club with folding tray tables, a side facing seat and a belted potty seat. All of the seats are high quality tan leather that is complimented by the rest of the interior. The seats offer fold away armrest and recline adjustments to accommodate reclining and relaxing after a long day.



Galley / Drink Service

We've maximized the efficiency of available space. The galley features essentials for beverage service including drink holders and ice storage. Conveniently located aft of the co-pilot's seat in the pyramid cabinet this drink station is a welcome addition to the typical King Air cabinetry.

Storage

The unique cabinetry design incorporates room for storage of in-flight essentials. The baggage area accommodates a considerable amount of luggage and has a cargo net to keep everything in place. Don't forget there's additional storage in the Raisbeck Wing Lockers!

Lavatory

The interior of King Air N308RM is equipped with an aft potty that is belted and may be used as the 6th passenger seat. A privacy curtain separates the lav area from the cabin.

Windows

The cabin features 6 large windows, which serve to brighten the cabin and increase the sense of spaciousness.

Cabin environment

The entire cabin environment is designed to deliver passengers to their destination with a much comfort as possible, there's plenty of leg room for all passengers, plus the convenience of a four place club making conversation pleasant and enjoyable. The club area includes two stowaway tables and 115v outlets so that you can take your office with you wherever you go.



1974 Beechcraft King Air C90 N308RM

Luxury and comfort in an affordable aircraft that is economical to own and operate. .

Exterior

This King Air makes a stunning impression everywhere you go!

The exterior of N308RM was completely refurbished in 2008 including being professionally stripped, primed and repainted to FAA & Beechcraft Specifications. Even though the paint was done in 2008 it still looks like new. The designer chose a brilliant Steel Blue Metallic for the base accented with Sapphire Blue Metallic with the upper portion of the aircraft being Matterhorn White.



Additional Features / Equipment

What else can this fine aircraft have to offer? The list goes on!

Raisbeck Wing Lockers

Raisebeck Nacelle Wing Lockers enable you to store golf Bags, skis, luggage, cargo and miscellaneous items in water-tight, lock secured compartments outside the cabin.



Raisbeck Aft Body Strakes

Raisbeck's Dual Aft Body Strakes improve directional Stability, passenger ride quality, pilot control and aircraft handling characteristics, and climb and cruise performance.



Rosen Sun Visors

115v Inverter with Dual Outlets in Cabin

Eagle Fuel Drains

Cleveland Wheels and Brakes

Maintenance / Inspections

Maintained and operated to part 135 Specifications! Aircraft is current Part 135!

Full maintenance report available upon request.

**Aircraft is located at the
Cherokee County Airport
in Jacksonville, Texas**

**For more information contact
Chip McClure
Office 903-586-1521
Cell 214-412-8816
Email chip@ridgeaire.com**



All specifications and representations made herein are subject to verification by the purchaser.
RidgeAir conveys no warranty or guarantee that the information contained herein is accurate or complete.
06/03/2014