

N178DA

1984 Citation SII

LH Engine Borescope

SN: 102064

December 2023

MSN: S550-0004



Prepared by the worldwide aviation specialists at RidgeAire, Inc.



Engine Evaluation/Condition Report

CUSTOMER:	Northstar Aviation	WORK ORDER NO:	RPR63097
ENGINE MFG:	Pratt & Whitney	ENGINE MODEL:	JT15D-4B
AIRCRAFT REG. NO:	N178DA	AIRCRAFT S/N:	550-0004
AIRCRAFT TT:	8014.8	AIRCRAFT TC:	8191
REASON FOR INSPECTION:		Customer requested Engine Borescope	
CUSTOMER NAME/PHONE NUMBER:		Dante Marinelli 928-764-1999	
ENGINE SERIAL #:	PCE-102064	ENGINE POSITION:	LEFT
TSN:	7930.8	CSN:	7918
TSO	UNK	CSO	UNK
ISSUED BY:	Gary J Jost		
DATE:	11-December-2023		

Engine Evaluation Report

DATE:



Engine Model:

JT15D-4B

Serial Number:

PCE-102064

Engine Time:

7930.8

Engine Cycle:

7918

• A/C Registration

Engine Data Plate



2023/12/08 11:32 PCE JC0456 340 OLYMPUS



2023/12/08 11:33 PCE JC0456 342 OLYMPUS

• LC Rotor (Inlet Fan)

T1 Inlet Sensor



2023/12/08 11:48 PCE JC0456 345 OLYMPUS



2023/12/08 11:50 PCE JC0456 352 OLYMPUS

Page 2

NOTE: Given the nature of borescope instrumentation it is often not possible to make observations and examine all areas of an individual engine as part of an evaluation. Based on this limitation, Dallas Airmotive, Inc. cannot and does not warrant its findings for borescope evaluations (pre-purchase and otherwise) against the possibility that hidden damage may exist that was not observable and reported by our technician at the time of the evaluation.

Engine Evaluation Report

DATE:



Engine Model:

JT15D-4B

Serial Number:

PCE-102064

Engine Time:

7930.8

Engine Cycle:

7918

- Inlet Case – several rivets noted with missing/broken head(s)



- Inlet Case – several rivets noted with missing/broken head(s)



INTENTIONALLY
LEFT
BLANK

Engine Evaluation Report

DATE:



Engine Model:

JT15D-4B

Serial Number:

PCE-102064

Engine Time:

7930.8

Engine Cycle:

7918

- Inlet Case – numerous rivets exhibiting signs of working



- Low Compressor (Fan) – typical, 1 blade exhibiting previous repair



Engine Evaluation Report

DATE:



Engine Model:

JT15D-4B

Serial Number:

PCE-102064

Engine Time:

7930.8

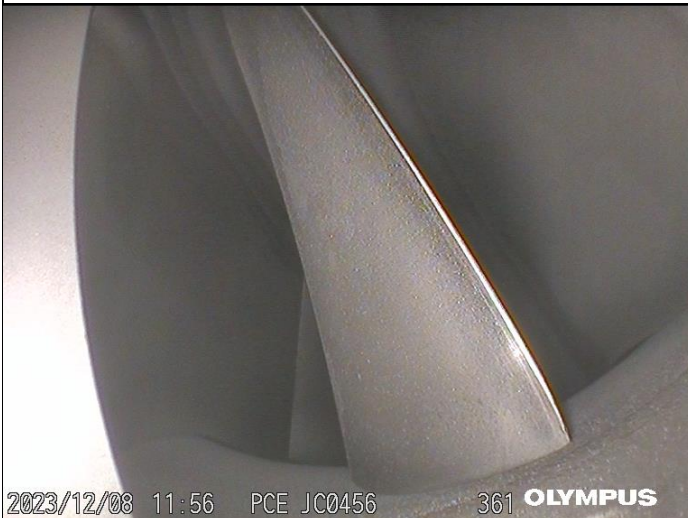
Engine Cycle:

7918

• Intermediate Case – no anomalies noted



• Impeller – main blade & mid-span - no anomalies noted



Engine Evaluation Report

DATE:



Engine Model:

JT15D-4B

Serial Number:

PCE-102064

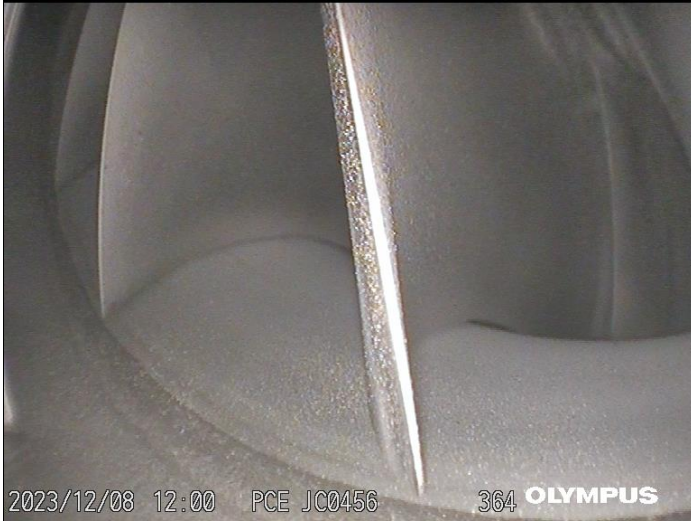
Engine Time:

7930.8

Engine Cycle:

7918

• Impeller – no signs of rub noted



• T1 Thrmcpl Harness – aft sensor – no anomalies noted

LT Rotor 3rd Stage Blades – no anomalies noted



Engine Evaluation Report

DATE:



Engine Model:

JT15D-4B

Serial Number:

PCE-102064

Engine Time:

7930.8

Engine Cycle:

7918

- LT Rotor 3rd Stage Blades – no anomalies noted

#4 Bearing Housing Assy. – minor leak noted



2023/12/08 12:06 PCE JC0456 371 OLYMPUS



2023/12/08 12:08 PCE JC0456 373 OLYMPUS

- #4 Bearing Housing Assy. – minor leak noted

#4Bearing Housing Oil Tubes – no anomalies noted



2023/12/08 12:08 PCE JC0456 374 OLYMPUS



2023/12/08 12:10 PCE JC0456 378 OLYMPUS

Engine Evaluation Report

DATE:



Engine Model:

JT15D-4B

Serial Number:

PCE-102064

Engine Time:

7930.8

Engine Cycle:

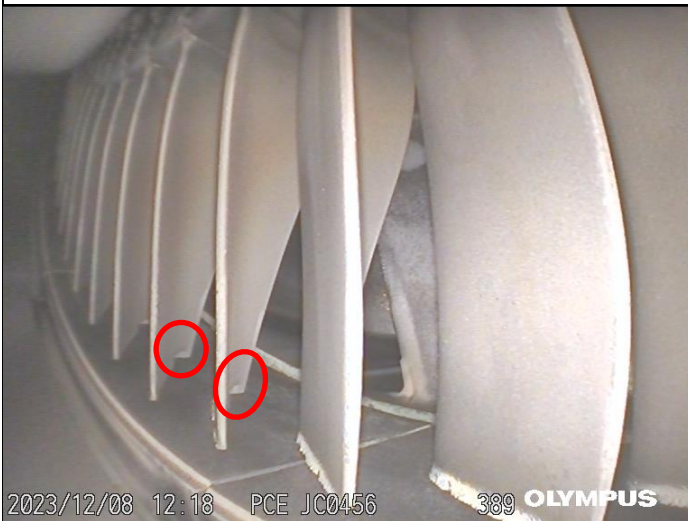
7918

- T6 Thermocouple – typical, no anomalies noted

HT Blades – T/E no anomalies noted



- HT Blades – T/E & L/E no anomalies noted, witness step indicates some blade length/life remaining



Engine Evaluation Report

DATE:



Engine Model:

JT15D-4B

Serial Number:

PCE-102064

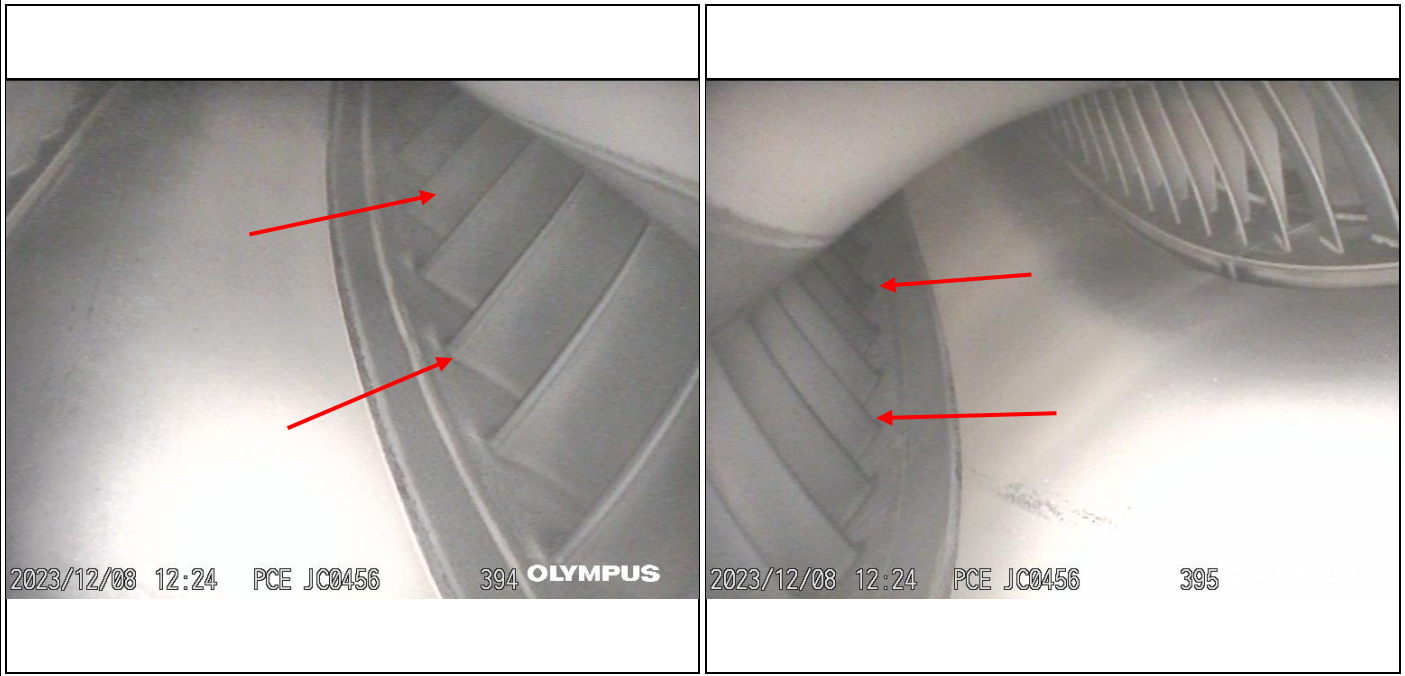
Engine Time:

7930.8

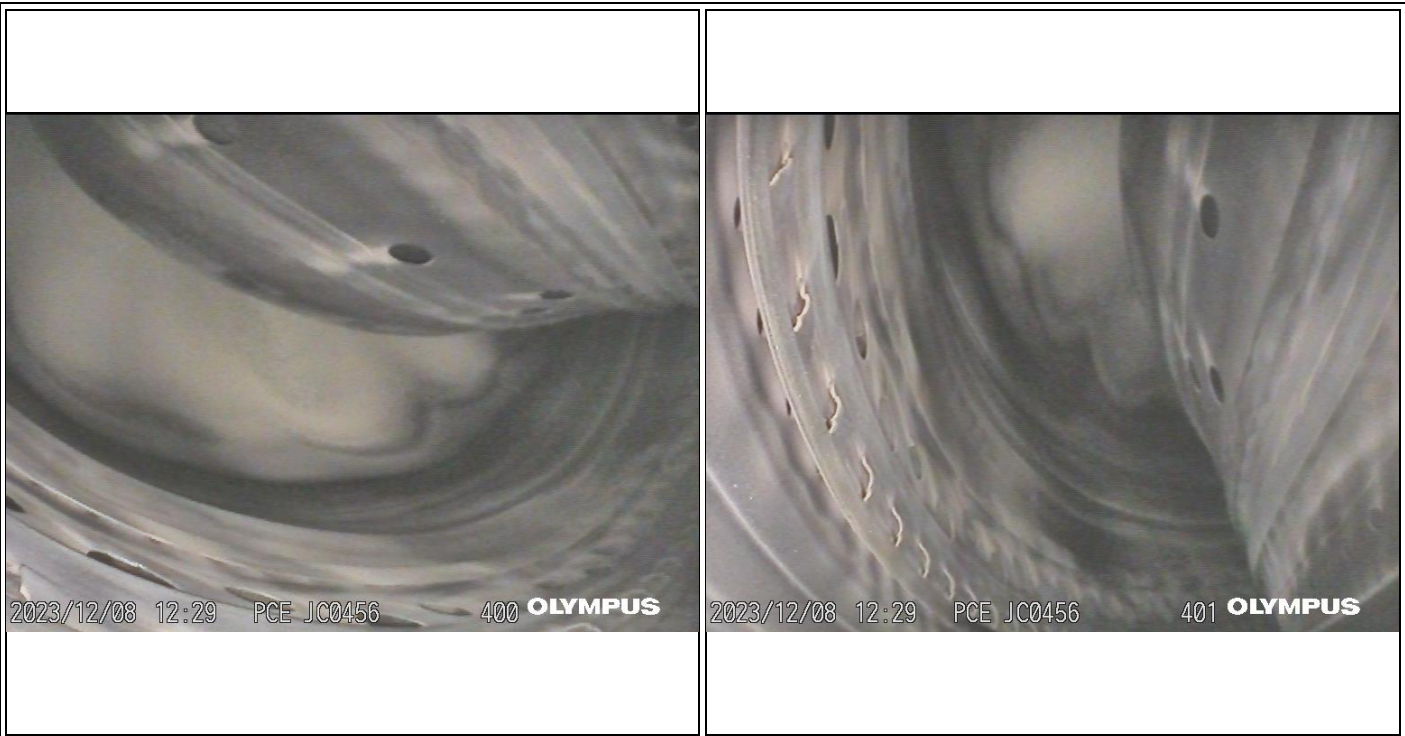
Engine Cycle:

7918

- LT Stator – L/E of vanes, no anomalies noted



- Combustion Liner – Inner/Outer Walls, Large Exit Duct (LED) -- no anomalies noted



Engine Evaluation Report

DATE:



Engine Model:

JT15D-4B

Serial Number:

PCE-102064

Engine Time:

7930.8

Engine Cycle:

7918

- Combustion Liner – Inner/Outer Walls, Large Exit Duct (LED) -- no anomalies noted



- Fuel Nozzle Tip & Sheath – no anomalies noted



Engine Evaluation Report

DATE:



Engine Model:

JT15D-4B

Serial Number:

PCE-102064

Engine Time:

7930.8

Engine Cycle:

7918

- Combustion Liner Support Pin & Fuel Adapter – no anomalies noted Deflector Ring, Segment, & Rivets – no anomalies noted



- Deflector Ring, Segment, & Rivets – no anomalies noted

